

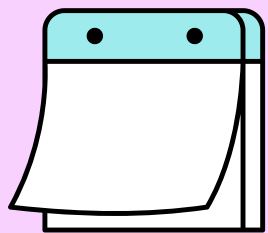
2026/2027 JFKL

JAPANESE ✨ GENERAL COURSE

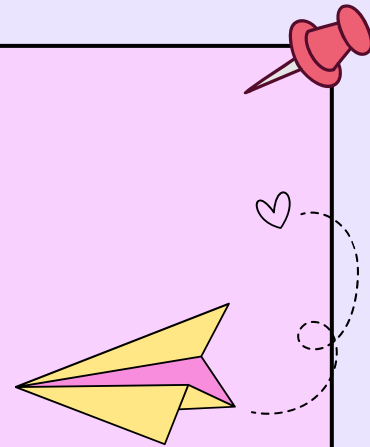
MID-TERM INTAKE

PHYSICAL STARTER COURSE PART 2

APPLICATION PERIOD



From **30 June 2026 (Tue)**
till **6 July 2026 (Mon)**

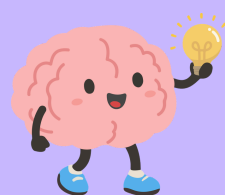


- ※ Admission is based on student's proficiency level and seat availability
- ※ Part 2 and above are the continuations of previous parts.
- ※ Seat is subject to first-come-first-served basis

PROFICIENCY REQUIREMENTS

You should be able to;

- Read Hiragana & Katakana a little
- Exchange greetings
- Give a simple self introduction
- Talk briefly about your family



Application form

2026/2027 JFKL

JAPANESE ✨ GENERAL COURSE

PHYSICAL STARTER COURSE PART 2 (Venue: JFKL)

Level	Course Duration	Day	Time	Number of Lessons	Fee (RM)
A1	28 July 2026 - 6 October 2026	Tuesday and Thursday*	18:45 ~ 20:45	20	600

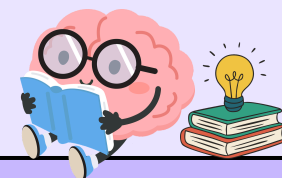
*Lessons are conducted twice a week.

Inclusive of a 10-min break each lesson.

MEET OUR INSTRUCTORS



Chan Sensei



Lew Sensei

Inquiry



kl_japanese_course@jpf.go.jp



03-2284-7228