

2025/2026 JFKL

Japanese General Course



After 5 years hiatus,
our **physical course**
is finally back!

Schedule

Physical Course (Venue: JFKL)

Class	Level	Part	Course Duration	Number of Lessons	Day	Time	Fee(RM)
Starter	A1	1	June 2025 - July 2025	7	Thursday	18:50	210
		2	August 2025 - October 2025	11		~	330
		3	November 2025 - March 2026	14		20:45	420

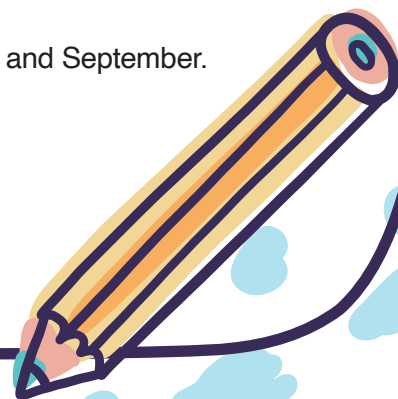
(Inclusive of a 15-min break each lesson.)

Online Course

Class	Level	Part	Course Duration	Number of Lessons	Day	Time	Fee(RM)
Starter	A1	1	June 2025 - July 2025	7	Wednesday	19:00 ~ 20:50	210
		2	August 2025 - October 2025	11			330
		3	November 2025 - March 2026	14			420
Elementary 1	A2	1	June 2025 - October 2025	17	Tuesday		510
		2	November 2025 - March 2026	14			420
Elementary 2	A2	1	June 2025 - October 2025	17	Wednesday		510
		2	November 2025 - March 2026	14			420
Pre-intermediate	A2/B1	1	June 2025 - October 2025	17	Tuesday		510
		2	November 2025 - March 2026	14			420

(Inclusive of a 10-min break each lesson.)

- The application will open in April and September.
- Only the application for Starter Part 2 Class will open in July as well as April and September.
- Every intake is subjected to availability.
- Part 2 and above are the continuation of previous parts.
- Classes are held once a week.
- Visit our website or contact us for application procedure and further details.



About The Course

1. The main goal is to be able to use the Japanese language to communicate in various real-life situations.
2. You will learn with your classmates in pair-work or group-work activities during classes.
3. All of our Japanese and Malaysian teachers are experienced and well trained in Japanese language education.
4. You have to be 16 years old and above to join the course.

Course Features

The JF Standards:

All the JFKL Japanese language classes are designed according to “The JF Standard for Japanese-Language Education”. The level of proficiency is indicated by the “Can-do” Statements which are divided into six levels from A1 to C2. These six levels are the same as those used in the Common European Framework of Reference for Languages (CEFR).



JF standard website

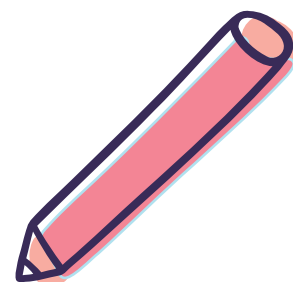
In this course, you will:

1. Learn basic, daily Japanese conversation.
2. Spend more time to practice speaking Japanese with your fellow classmates.

We also offer free JF online learning materials in order to provide you with more opportunities to practice.

Starter: Zero-basic beginner level

Elementary 2: Entrance to Part 1 is intended for those who has proficiency approximately equivalent to JLPT N5



Main Textbook

“MARUGOTO: Japanese Language and Culture” is a coursebook that is based on the JF Standard for Japanese Language Education.

It has the following features:

- A lot of illustrations and photographs are used to make it colourful and fun to study.
- A lot of listening materials based on real-life situations.
- Offer learning in both language and culture to help with intercultural understanding.



For more info



MARUGOTO:
Japanese Language and Culture

Contact Us

THE JAPAN FOUNDATION, KUALA LUMPUR (JFKL)

Japanese Language Department
18th Floor, Northpoint, Block B, Mid-Valley City,
No.1, Medan Syed Putra, 59200 Kuala Lumpur.
TEL: (03) 2284-7228

Inquiry

kl_japanese_course@jpf.go.jp



website