

TEMAN BARU



ISSUE NO.

72

October - November 2013

MEDIA / ART KITCHEN KUALA LUMPUR

Media/ Art Kitchen -Reality Distortion Field- extra/ordinary



Exhibition/Lab/Workshop++



JFKL's Upcoming Programme

MEDIA ART EXHIBITION	Media/Art Kitchen – Reality Distortion Field
ART & PERFORMANCE	Hiroshi Koike Bridge Project
ART & PERFORMANCE	"MAU: J-ASEAN Dance Collaboration"
FILM SCREENINGS	THE WEEKEND JAPANESE FILM SHOW
EXHIBITION	Gazing at the Contemporary World
LECTURE	JAPAN'S ENGAGEMENT
LANGUAGE	WITH ASEAN: STRATEGIC CONVERGENCE AND DIVERGENCE
GRANT	Event Calendar - November

REPORTS:

- The Japan Foundation Fellowship Programme ●
- Japanese Culture Session-Furoshiki ●
- Japanese for Teacher- How to teach Culture- ●

Media/Art Kitchen – Reality Distortion Field

On the 6th of October art lovers and shop-goers will witness the birth of a new art show in KL. "Media/Art Kitchen – Reality Distortion Field" is a collaboration project with over 50 artists selected by 13 curators from Malaysia, Japan, Indonesia, Philippines, Singapore, Thailand and Vietnam, which tours 4 countries. 2 curators from Malaysia, Adeline Ooi and Suzy Sulaiman have selected 13 media artists for the exhibition in Kuala Lumpur. The project is organized by the Japan Foundation in commemoration of the 40th Year of ASEAN-Japan Friendship and Cooperation in 2013.

Strategically selected, MAP Publika the venue of the exhibition will invite audiences to encounter "Media Art" - presenting ways of using media that incorporates the surrounding environment and the repurposing of everyday tools, the exhibition will encourage the discovery of new perspectives for reviewing the media circumscribing our living environment. The lab will enable visitors to convert the inspiration they receive from the works on display into an active response, rather than simply passively consuming the exhibition.

Duration : 6th to 20th October, 2013 (Opening on the 5th October 2013)
Venues : Black Box, Map KL; Art Row; Plan B at Publika
Curator from Malaysia : Adeline Ooi & Suzy Sulaiman
Artists for the project in KL : 13 Artists from Malaysia, Japan, Indonesia, Philippines, Singapore, Thailand and Vietnam
Official Website : <http://mediaartkitchen.tumblr.com/>

Artists

MALAYSIA

Operasi Cassava



FAIRUZ SULAIMAN



JAPAN

KUWAKUBO Ryota



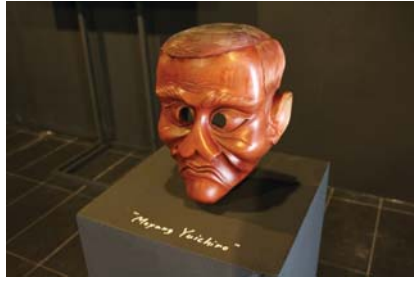
HAGIHARA Kenichi



HORIO Kanta



TAMURA Yuichiro



YAGI Lyota



INDONESIA

Lifepatch



NARPATI AWANGGA a.k.a oomleo



THE PHILLIPINES

Tad ERMITANO



SINGAPORE

BANI HAYKAL



THAILAND

Nitipak SAMSEN



VIETNAM

The Propeller Group





Hiroshi Koike is back in Malaysia!

After much success of Spring Day in 2000, Spring in Kuala Lumpur in 2003 and Three Sisters in 2007, acclaimed director and choreographer Hiroshi Koike is back in Malaysia with his new project.

Having been described as "Physical Theatre", the project inherits one-and-only Hiroshi Koike style: mysterious, delusional and fun theatre with highly skilled cross-genre artists. Being the first project after disbanding the world-recognized company Pappa TARAHUMARA, Hiroshi Koike Bridge Project explores of the world after the great earthquake of Japan, bridging people to people, past and present, crossing the boundary of different arts, media and body.

The program is held in conjunction with the 40th Year of ASEAN-Japan Friendship and Cooperation, presented by the Japan Foundation Kuala Lumpur, jointly organized with Damansara Performing Arts Centre and Penang Performing Arts Centre. The show will travel to Manila, Jakarta, Kuala Lumpur, Penang, Delhi and Bangalore.

注文の多い料理店

The Restaurant of Many Orders



KL Show

Damansara Performing Arts Centre

26th October 2013 8.30pm

27th October 2013 3.00pm

RM50 for Adults

RM25 for Students and JFKL members

Penang Show

Penang Performing Arts Centre

23rd October 2013 8.30pm

RM30 for Adults

RM15 for JFKL Members, Students, Physically-challenged,
TAS / Senior Privilege Card Holders & Senior Citizens
above 65

Booking information

For KL

Purchase online via <http://www.dpac.com.my/>,
Or Walk in at Damansara Performing Arts Centre, Box office
TEL +603-4065 0001, 4065 0002
H-01, DPAC, Empire Damansara,
Jalan PJU 8/8, Damansara Perdana,
47820 Petaling Jaya, Selangor.

For Penang

Purchase Online via www.ticketpro.com.my
Or Walk in at penangpac +604-899 1722 / 2722
3H-3A-1, Straits Quay, Jalan Seri Tanjung Pinang,
Tanjung Tokong, 10470 Penang.

HIROSHI KOIKE and Bridge Project

Director, Writer, Choreographer of The Restaurants of Many Orders.

Born and raised in Hitachi, Ibaraki prefecture, Japan. After working as a TV director, he started a performing arts company, "Pappa TARAHUMARA", in 1982. He has directed 55 pieces and worked with many artists in many countries and established high reputation throughout the world before closing of the company.

After closing "Pappa TARAHUMARA" after 30 years in May 2012, he had started a new team Hiroshi Koike Bridge Project in June 2012. The project not only produces performing arts, but also applies various media; film, photography, installation works and writings to the stage performance. By conducting events, lectures, workshops, and educational programs, the project aims to educate people to "think through their BODY" and create a bridge between the world, the time and the culture as an international art project.

"The Restaurant of Many Orders"

The story is a known nationwide fable in Japan, and is one of Kenji Miyazawa's most famous pieces. Focused on its theme "The relationship between Human and Nature", the show is based on this tale and is composed of contemporary and traditional dance, voice, songs and masks, in order to make audience travel between world of animals and world of humans.

Produced by



Presented by



In conjunction with



Co-organized by



MAU: J-ASEAN Dance Collaboration

MAU 舞う weaves a dance fabric with the vibrant colours of Malaysian traditional dance and Filipino stylized Mindanao dance, Balinese court dance, Japanese Kabuki dance, and the Chinese Liyuan opera from Singapore.

Choreographer and Director Fujima Kanjuro VIII, the Grandmaster of the 300 year old Fujima School of Kabuki, laces MAU with Kabuki leitmotifs to create a multi-layered dance adventure full of elegance and wit.

Commissioned by the Japan Foundation to mark the 40th anniversary of Japan-ASEAN friendship, MAU (meaning 'dance' in Japanese) celebrates the rich tapestry of Asian dance traditions in a modern setting. The performance will tour to Jakarta, Manila, Kuala Lumpur and Singapore in November.

Dates: **8.30pm, 22nd November & 3pm 23rd November, 2013**

Venue: **Istana Budaya**

Ticket information and booking information will be released soon: **Please refer to www.jfkl.org.my**

* The performance will tour to Jakarta (9 & 10 November at Theatre Hall Jakarta), Manila (16 & 17 November at Cultural Center of the Philippines), and Singapore (27 & 28 November at Nanyang Academy of Fine Arts).



ASWARA Dance Company (Malaysia)



LKB Saraswati (Lembaga Kesenian Bali Saraswati) (Indonesia)



**Soke-Fujima-Ryu (Fujima School)
(Musicians: Umeya Tomoe, Umeya Ukon)**



Airdance (Philippines)



Siong Leng Musical Association (Singapore)

FILM SCREENINGS



THE WEEKEND JAPANESE FILM SHOW

Meet KOMANEKO!



©TYO/dwarf•Komanecko Film Partners

Date : **12th October 2013 (Saturday)**

Time : **3pm**

Venue : **Pawagam Mini, Tingkat 3, Fakulti Filem dan Video, ASWARA (Bangunan Baru)**

Admission is **free**.

Screening Title

KOMANEKO -The Curious Cat- (Color / 2006 / 60min)

AND

Komanecko's Christmas -A lost present- (Color / 2009 / 20min)

LECTURE



JAPAN'S ENGAGEMENT WITH ASEAN: STRATEGIC CONVERGENCE AND DIVERGENCE

JFKL, the Malaysian Association of Japanese Studies (MAJAS), and Japan Studies Program, Department of East Asia Studies, Faculty of Arts and Social Sciences, University of Malaya are proud to present a public lecture on Japanese Studies by Dr. Tang Siew Mun from Institute of Strategic and International Studies Malaysia.

Title: **JAPAN'S ENGAGEMENT WITH ASEAN: STRATEGIC CONVERGENCE AND DIVERGENCE**

Date: **21 November 2013**

Venue: **Faculty of Arts and Social Sciences, University of Malaya, KL**

Speaker: **Dr Tang Siew Mun, Director** (Foreign Policy and Security Studies), Institute of Strategic and International Studies (ISIS) Malaysia

EXHIBITION

Gazing at the Contemporary World Japanese Photography from the 1970s to the Present



Daido Moriyama (b. 1938)
Kanagawa, 1969

As part of Japan Foundation visual arts programs, we organize traveling exhibitions with artworks from our own collection that tour countries throughout the world. This traveling exhibition, "Gazing at the Contemporary World: Japanese Photography from the 1970s to the Present" is an overview of the diverse photographic expression that has emerged in Japan since the 1970s.

Penang

Duration : **8th November – 14th December**

Venue : **Muzium & Galeri Tuanku Fauziah, Universiti Sains Malaysia**

LANGUAGE

Japanese Language Course New Intake Business Japanese

This course concentrates mainly on business settings. One will learn and practice useful expression that will focus on phone conversations, methods in reporting and others.

Additionally, one will also acquire the knowledge of Japanese work ethics and manners in the Japanese working environment.



Courses	Business Japanese
Level	B1 Level* (You are advised to have the proficiency of JLPT level N3 or its equivalent before enrolling into this course.) * Based on JF Standard Level (http://www.jfstandard.jp)
Date	7 Dec.2013 - 29 Mar.2014 11:00-13:10 (2 hours) Saturday
Session	12 Lessons
Place	JFKL (M Floor Northpoint, Block A)
Maximum	16 person
Fee	RM360 (RM280 for students of JFKL)
How to apply	Details available on our website from 1st Nov 2013! http://www.jfkl.org.my/language/

The Japan Foundation Kuala Lumpur (JFKL) offers grants to cover partial expenses for the implementation of intellectual activities and cultural events that fall into the categories of The Japan Foundation's program. The grants are awarded to projects which can promote further understanding of Japan in terms of social sciences and humanities, or any cultural fields. For program guidelines please log on to; <http://www.jfkl.org.my/grants/>

Below are some of the highlight events supported by the Japan Foundation Kuala Lumpur. Don't miss it!

Asia Pacific Impro!



Asia Pacific Impro! is a platform for selected dance and music improvisers based in the Asia Pacific region to conduct research on improvisation as an art form and to exchange ideas in a mutually supportive environment. Besides meetings and research labs, there will also be workshops and performances. The dance workshops are open for the public to attend, and no previous dance experience is required. Two performances will serve as a culmination of the artists' research and collaboration. Each performance follows a different format. Both shows are therefore unique, each offering a distinct and memorable experience for the audience.

Date: **4-10 November 2013**

Venue: **Damansara Performing Arts Centre (DPAC)**

Japanese artists: **Shoko Kashima, Chico Katsube & Kimiyo Ogawa**

Organizer: **MyDance Alliance**

Website: **www.asiapacificimpro.org**

Ikoto Dance Project

Date: **22-24 November 2013**

Venue: **Melaka Art and Performance Festival (MAP)**

Japanese artist: **Ikko Suzuki**

Organizer: **French Language and Culture Centre**

Website: **<http://www.melakafestival.com/>**



Coming to perform in Melaka is particularly meaningful for Tho Anothai and Ikko Suzuki, as it is the place where they met and started sharing their experiences in 2010. They will present the result of their collaboration. A work created by French and Japanese dancers, infused with Western and Eastern cultures, IKOTO

is by nature a cross-cultural project. The dancers aim at enhancing a dialogue between both cultures but also between tradition and modernity. As such, they participate to the dynamism of the contemporary international dance scene. In the same time, Melaka Art and Performance Festival, a major international event, is the perfect place for them to gain more visibility and awareness around their artistic work and identities.

6th Nyoba Kan International Butoh Festival

Date: **23 November to 1 December 2013**

Venue: **White Box and Outdoor Stage, MAP Publika/**

Damansara Performing Arts Centre

Japanese artist: **Yuko Kaseki**

Organizer: **Pusat Tarian Nyoba Kan**

Website: **www.nyobakan.com.my**



nyoba
kan

6th Nyoba Kan International Butoh Fest is an annual event since year 2008. The purpose is to allow performing arts exchange with the Butoh artist from different countries. This year the organizer would like to invite Yuko Kaseki, an experience Japan Butoh artist, also the founder of Cokaseki (Dance company based in Berlin) since year 1995, to perform their Butoh Fest and provide workshop. The organizer believes that she will be able to share her different experience of Butoh to the audience in Malaysia. This is also an opportunity of culture, arts and experience exchange between the artists that involves with this fest.

CONTACT 2013 Contemporary Dance Festival (Singapore)

Date: **20 November to 8 December 2013**

Venue: **Esplanade Theatre Studio / Goodman Arts Centre**

Japanese artist: **Mikiko KAWAMURA, Tadashi SHIMADA & Tamako Akiyama**

Organizer: **The Human Expression (T.H.E) Dance Company Ltd**

Website: **www.the-contact.org**

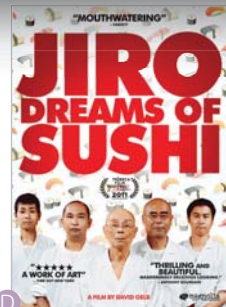
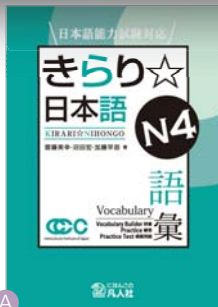


CONTACT is an annual dance platform, presented by Singapore's leading contemporary dance company, The Human Expression (T.H.E Dance Company). It is a partnership with the Singapore National Arts Council and a collaboration with Esplanade Theatres on the Bay, Singapore's national arts venue. Into its 4th year, CONTACT 2013 continues its strong focus on the exchange, learning and discovery of contemporary dance. This intensive festival will allow participants to

immerse yourself in numerous technique classes, workshops and performances given by seminal international dance artists both established and upcoming.

JAPANESE BOOKS

Library: What's New!!



Japanese Language for Learners

- A** 「きらり日本語 N4語彙」インターカルト日本語学校 齊藤美幸 ほか【著】凡人社
 「中級 日本語で挑戦!スピーチ&ディスカッション」黒崎典子【編著】凡人社
 「オタジャバ!オタクな例文で覚える上級表現&文型」オタジャバ製作委員会【編著】国書刊行会

2013年 Library Call No.810.7925
 2012年 Library Call No.809.4T
 2012年 Library Call No.815 T

Japanese Language for Teachers

- B** 「日本語文法の論点43」近藤安月子、姫野伴子【編著】研究社
 「ドラマチック日本語コミュニケーション」野呂博子、平田オリザほか【編】ココ出版
 「日本語教育のためのコーパス調査入門」李在鎬、石川慎一郎 ほか【著】くろしお出版

2012年 Library Call No.815 E
 2012年 Library Call No.817.8E
 2012年 Library Call No.810.7

Fiction

- C** 「光圀伝」<第3回山田風太郎賞>冲方丁【著】角川書店
 「ツナグ (文庫版)」<第32回吉川英治文学新人賞>辻村深月【著】新潮社
 「あなたへ(文庫版)」森沢明夫【著】幻冬舎

2012年 Library Call No.913.6UBU
 2012年 Library Call No.913.6TSU
 2012年 Library Call No.913.6 MOR

Non Fiction

- 「<主婦>の誕生」木村涼子【著】吉川弘文館
 「天国のあなたへ、つたえたい心の手紙」くらしの友「心の手紙」編集部【編】宝島社

2010年 Library Call No.367.3
 2012年 Library Call No.914.68

Arts & Culture

- 「ジブリの哲学」鈴木敏夫【著】岩波書店
 「創造なき日本」村上隆【著】角川書店

2011年 Library Call No.778.77
 2012年 Library Call No.704

Craft

- 「手ぬぐいで作るこども服」モリ ユカ【著】アスペクト
 「かわいい和 素材集 / CD-ROM 付」「かわいい和」制作委員会【著】エムディエヌコーポレーション

2010年 Library Call No.593.36
 2010年 Library Call No.727

DVDs

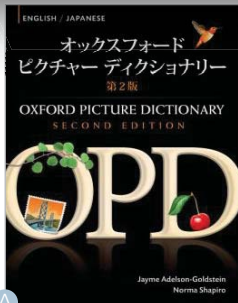
- 「今日から達人 ビジネスマナー講座 / 第1~4講」(30min×4) ウォンツ / 2009 / Library Call No. DVD426~DVD 429
D 「JIRO DREAMS OF SUSHI / 次郎は鮨の夢を見る」(82min) Directed by David Gelb / Magnolia Pictures / Language: Japanese / Subtitles: English, Spanish / 2011 / Library Call No. DVD 430
 「MATSURI / 日本の祭り」(44min) Tokuma Crown Music Inc. / Language: Japanese ,English, Chinese / 2011 / Library Call No. DVD 431

<Recommended Materials>

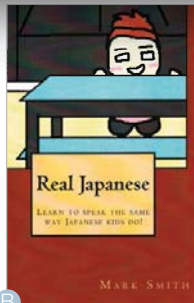
「ツナグ」
 今年の日本映画祭でご覧になった方も多いのでは? もし、たった一度だけ、一人の死者と再会できるとしたら、あなたは誰と再会したいですか? 生者と死者をたった一夜だけ引き合わせてくれる使者「ツナグ」。人間のエゴ、醜さ、優しさ、愛がたくさん詰まった短篇連作小説です。

「JIRO DREAMS OF SUSHI / 次郎は鮨の夢を見る」* Available in AV booth in the library only

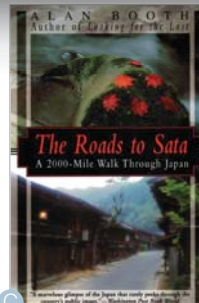
"You have to fall in love with your work." "You must dedicate your life to mastering your skill. That is the key to happiness." he says. This is a documentary film on 85-year-old sushi master Jiro Ono of "Sukiyabashi Jiro" a 10-seat, sushi-only restaurant awarded 3-star Michelin Guide in Ginza, Tokyo.



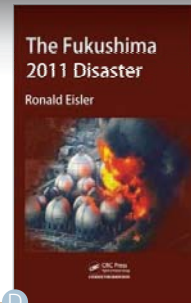
A



B



C



D

Education

- A [Oxford Picture Dictionary English-Japanese: Bilingual Dictionary for Japanese speaking teenage and adult students of English]**/ by Jayme Adelson-Goldstein and Norma Shapiro. New York : Oxford University Press, 2009. Library Call No. 423 ADE
- B [Real Japanese : Learn to Speak the Same Way Japanese Kids Do!]**/ by Mark Smith. Tennessee:IGS testing, 2013. Library Call No. 495 SMI
- [Kanji Pict-O-Graphix: Over 1,000 Japanese Kanji and Kana Mnemonics]**/ By Michael Rowley. Berkeley, Calif. : Stone Bridge Press, 1992. Library Call No. 811.2T

[Kana Pict-o-Graphix: Mnemonics for Japanese Hiragana and Katakana by Rowley, Michael published by Stone Bridge Press]/ by Michael Rowley. Berkeley, Calif. : Stone Bridge Press, 1995. Library Call No. 811.5T

General Reading

- D [The Fukushima 2011 Disaster]** by Ronald Eisler. Boca Raton : CRC Press, 2013. Library Call No. 363.17 EIS
- [Midway: The Battle That Doomed Japan, the Japanese Navy's Story]**/ by Mitsuo Fuchida and Masatake Okumiya. Edited by Clarke H. Kawakami and Roger Pineau, with a foreword by Raymond A. Spruance. Annapolis: Naval Institute ,1955. Library Call No. 940.545 FUC
- [47 Ronin]**/ by John Allyn . Tokyo:Tuttle Publishing, 2012. Library Call No. 895 ALL

Art and Culture

[Japanese Dolls :The Fascinating World of Ningyo]/ text and photographs by Alan Scott Pate. Tokyo : Tuttle Pub., 2008. Library Call No. 745.592210852 PAT

[Krazy Karakuri Origami Toys Kit Paper Toys That Walk, Jump, Spin and Amaze!]/ by Andrew Dewar. Tokyo :Tuttle Publishing ,2012. Library Call No. 736.982 DEW

Fiction Novel

- C [The Roads to Sata: A 2000-Mile Walk Through Japan]**/ by Alan Booth. New York : Weatherhill, 1985. Library Call No. 915.2 BOO
- [The Thief]**/ by Fuminori Nakamura. New York : Soho Crime, 2012. Library Call No. 895.6 NAK.

<Recommended Books for Reading>

[The Thief by Fuminori Nakamura]

The Thief is a seasoned pickpocket. Anonymous in his tailored suit, he weaves in and out of Tokyo crowds, stealing wallets from strangers so smoothly sometimes he doesn't even remember the snatch. Most people are just a blur to him, nameless faces from whom he chooses his victims. He has no family, no friends, no connections. But he does have a past, which finally catches up with him when Ishikawa, his first partner, reappears in his life, and offers him a job he can't refuse. It's an easy job: tie up an old rich man, steal the contents of the safe. No one gets hurt. Only the day after the job does he learn that the old man was a prominent politician, and that he was brutally killed after the robbery. And now the Thief is caught in a tangle even he might not be able to escape.

Library closure notice

Hari Raya Haji (Tuesday) -15 October 2013
 Deepavali (Saturday) -2 November 2013
 Awal Muharram (Tuesday) – 5 November 2013

Report: The Japan Foundation Fellowship Programme - 4 Months Research Experienced in Japan

By Mr. Indera Syahrul Mat Radzuan (18th February to 17th June 2013)

Mr. Indera Syahrul Mat Radzuan, a PhD candidate from Faculty of Built Environment, University of Malaya was invited to Japan under the Japan Foundation Fellowship Programme commenced from 18th February to 17th June 2013 (4 months). He is currently working on his PhD research entitled “*Cultural Heritage Incentives for the Conservation of Traditional Settlements for Sustainable Communities: Comparative Studies between Malaysia, Japan and South Korea*” which was funded by the Japan Foundation.

Exploring Japan's Historic Village

When I first visited Japan on last February 2012 for my research activities, I was so impressed with the country's system of preserving their historic buildings particularly the traditional settlements. The best opportunity to revisit Japan again was given to me by the Japan Foundation Fellowship Programme to extend my research work from February to June 2013 pertaining to the cultural heritage incentives for the conservation of traditional settlement. The recent study has been conducted in Ogimachi Village, Shirakawa-go at Gifu Prefecture. The Ogimachi is the farm village located in the Chubu mountain region of Gifu Prefecture, which is situated on the east bank of the Sho River in the central of Japan. The most architectural significant in Ogimachi is the gassho-style houses, with the thatched roof shape look like the hands' folded in a prayer.

Today, some of the houses remain as a group, and this village was inscribed as UNESCO's World Heritage List in December 1995 and has become a well-known tourist destination in Japan. In Ogimachi, there are about 117 *gassho*-style buildings mixed with 329 modern buildings, two Buddhist temples, two Shinto Shrines, and miscellaneous other buildings co-existed harmoniously.

To really feel the authentic way of how the Ogimachi Village peoples living in the *gassho*-style houses, my Japanese interpreter, Mr. Yota Tamura and I managed to stay at one of the traditional Japanese inn. In the house, we were given a chance to wear a *yukata* (a casual kimono) clothes, to feel the hot and fantastic the *ofuro* (Japanese bathtub) and the most fascinating part is to taste the healthy Japanese cuisines. We have spent about 6 days exploring this unique Japan's historic village and its charming people.



Meeting with the Communities and Local Officials

For me, the Ogimachi Village is not just about a typical traditional settlement, rather it gives more meaning to associate this historic village with people and its communities. Currently, about 1,746 people living in this village with over 500 families. In this village, private houses are occupied by the owners and thus many of the houses have been converted to *minshuku* (bed-and-breakfast inn), restaurants, souvenir shops, museums and other tourism-related businesses. Concerning to field work, I am so delighted as I able to complete my survey (with the help from my Japanese interpreter) and the communities are very cooperative to share their thought on the current incentives policy with the selected local communities. Besides a sampling survey, to attain a holistic view, formal interviews were carried out with the officials of Gifu City Hall, Shirakawa Village Office and the World Heritage Shirakawa-go Gassho Style Preservation Foundation. This consist on-site interviews with groups of specialist (including curators), cultural reference group (including Buddhist priest, heritage manager, cultural group, private sector and NGOs).



Attending Conference at Osaka and Last Moments in Tokyo

The last location outside Tokyo where I managed to visit was Osaka city. Besides have a sight-seeing in Osaka, I also presented my research finding at the Asian Conference of Sustainable Communities, Energy and the Environment (ACSEE) 2013?. The paper entitled, "*The challenge of sustainable communities: Incentives for the conservation of historic village in Japan*". The 20 minutes presentation is done at the Ramada Hotel, Osaka. The conference also gathered others international participants and for me it ended in success. In Osaka, I also tried some local foods such as *udon* (Japanese noodles) and others Japanese sweets. The last moment of my stay in Japan was in Tokyo city (where I reside at Waseda University for the entire 4 months). I will never forget the delicious thick of Japanese *udon*, a hot and marvellous bowls of *tempura* (deep fried seafood and vegetables), the convenience atmosphere of Japanese's stores, 100 yen shops, the crazy of Japanese anime at Akihabara, and those subway stations that I frequently used – Waseda, Takadanobaba, Nippori, Ueno, Ikebukuro and Shinjuku. Above all, the cordial, warm and sincere relationship with Japanese people will give me a truly meaning of Asian culture. Japan is always in my heart and the memory will lasting forever and ever.



Experiencing Kyoto

On the second months of my stay in Japan, I visited Kyoto - a most truly city of the Japanese culture. It was unforgettable experience to travel by *shinkansen* (the bullet train) from Tokyo to Kyoto. Running at speeds of up to 320 km/h, a 513 km journey from both the cities only took 2 hours and 18 minutes. Based on what I have experienced, it is exaggerate to say that Japan has an extensive and efficient rail network as compared to other developed nations and on top of that, Shinkansen was known for its punctuality and efficiency. In Kyoto, I spent about 4 days visiting the most attractive places such as Kinkakuji Temple, Nijo Castle, Gion district, Kodaiji Temple, Kiyomizu-dera Temple, Ginkakuji Temple, Kyoto Imperial Palace, Toji Temple and other beautiful shrines.

Eventually, I had to leave this beautiful city, but a warm memory of the place and people still lingers in my mind and makes me want to visit this country again.

Acknowledgement

I am deeply indebted to the Japan Foundation for giving me the possibility to complete my research work in Japan, as one of my comparative research studies. Despite language barrier, I was delighted to have received an invitation from the Japan Foundation Fellowship Programme to conduct my study in Japan for 4 months.



Report: Japanese Culture Session-Furoshiki

17th Aug 2013

Furoshiki workshop was conducted recently, as part of the effort to enhance JFKL students' appreciation and understanding of the Japanese culture while learning the language. It started off with briefing about the size and origin of Furoshiki, and introduce how ecology to use Furoshiki instead of using plastic bags.

After that we showed the skit "Yuki's daily life" to introduce how useful Furoshiki is. All of our students really enjoyed guessing how to wrap each items.



Report: Japanese for Teacher- How to teach Culture-

17th Aug 2013

JFKL has been conducting classes for non-native Japanese teachers to enhance their Japanese Language Skill and Teaching Method. For the class held on 17th August 2013, with the theme "How to Teach Culture". In the first session, the participants participated in a Furoshiki workshop with other JFKL students. Thereafter, they attended a separate class where they need to recall and made aware of the

existence of elements such as cross cultural understanding, creativity, moral sense and expression among others in the cultural session. They also talk about intrinsic values, practices and meanings to life. The participants described the class as very useful and by applying this method, they are confident to teach their students as they now have a better understanding in teaching the Japanese culture.



JFKL Holiday Notice

Please be informed that JFKL Library will be closed on the following days:

15/10/2013 Hari Raya Haji

2/11/2013 Deepavali

5/11/2013 Awal Muharram



JAPAN FOUNDATION 國際交流基金

find us on



www.facebook.com/theJapanFoundationKL

"TEMAN BARU" is distributed to JFKL members.

JFKL membership is available upon application. Membership fee is RM10 per year.

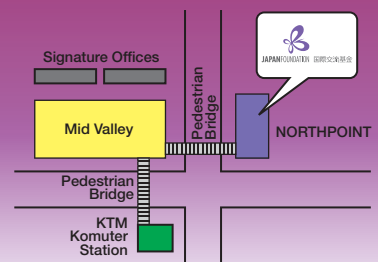
The Japan Foundation, Kuala Lumpur (JFKL)

18th Floor, Northpoint, Block B, Mid-Valley City, No. 1, Medan Syed Putra, 59200 Kuala Lumpur

Tel: (03) 2284 6228 Fax: (03) 2287 5859

Homepage: <http://www.jfkl.org.my> E-mail: jfcc@jfkl.org.my

happy
diwali



ISSN 1394-3448



9 771394 344001