

TEMAN BARU


JAPAN FOUNDATION
國際交流基金

ISSUE NO.

70

June - July 2013

BUNRAKU

TRADITIONAL
JAPANESE
PUPPET THEATRE

JFKL's Upcoming Programme

ART & PERFORMANCE	BUNRAKU- Traditional Japanese Puppet Theatre
FILM SCREENINGS	The Weekend Japanese Film Show
FILM SCREENINGS	KKIFF - Kota Kinabalu International Film Festival
LANGUAGE	Japanese Language Course New Intake
GRANT	Event Calendar - June

REPORTS:

- Japan Handmade - Design From Kyoto •
- JS Forum Malaysia Workshop •
- The 10th Japanese Speech Contest •

Witness the grace and grandeur of a 400 year old Japanese tradition, performed for the first time ever in South East Asia. BUNRAKU- Traditional Japanese Puppet Theatre is a showcase of fastidious teamwork as three puppeteers per puppet work in perfect unity with live traditional music and vocals.

Led by upcoming Living National Treasure of Japan, Kanjuro Kiritake III, and featuring puppets which are intricately maintained historic artifacts, the show is presented in three parts: An interpretation of a harvest celebration dance, an excerpt of the classic "Fox in the Inner Garden", and a behind-the-scenes demonstration.



<p>DATE 28TH JUNE 2013 (8.30PM), 29TH JUNE 2013 (3PM, 8.30PM)</p>	<p>TICKETS RM60 (ADULTS) RM30 (STUDENTS, DISABLED, SENIOR CITIZENS, JCKL/JFKL/TAS CARD MEMBERS) RM30 FOR FLOOR SEATS <small>* PREMIUM SEATS ARE ALSO AVAILABLE</small></p>	<p>VENUE PENTAS 2, KUALA LUMPUR PERFORMING ARTS CENTRE (KLPAC) SENTUL PARK , JALAN STRACHAN (OFF JALAN IPOH) 51 100 KUALA LUMPUR BOX OFFICE TEL +603 4047 9000</p>
--------------------------------------------------------------------------------------------------------------------------	----------------------------------------------------------------------------------------------------------------------------------------------------------------------------------------------------------------------------------------	---------------------------------------------------------------------------------------------------------------------------------------------------------------------------------------------------------------------------------------------------

Be a Personal PATRON!
 This BUNRAKU performance is a not-for-profit production which is made possible by generous support of many organizations. Please be our personal Patron and get the Premium Seats!

GENERAL TICKETS

PREMIUM TICKETS



ICHOU Seats
 RM60
 (Adults)

RM30
 (Students, Disabled,
 Senior Citizens, JCKL/JFKL/
 TASTAS Card Members)



KITSUNE
Floor Seats
 RM30

* No chair will be provided for KITSUNE seat.

* Only available for 29th.



PATRON of BUNRAKU Seats
 RM300 (Limited to 10 seats only)

Premium Seats with:
 Welcome Drink
 Exclusive Autographed Poster
 Photo Session with the Performer
 BUNRAKU Original Goods as souvenir
 Invitation to the Premier Reception Party
 (28th June Friday after the show)



SAKURA Seats
 RM100 (Limited to 30 seats only)

Premium Seats with:
 Welcome Drink
 Photo Session with the Performer
 BUNRAKU Original Goods as souvenir

* Terms and Conditions Apply.
 * For detail please contact Bunraku in Malaysia
 2013 Committee Secretariat at +603 2284 6228

Ticketing Information

Tickets can be purchased at:
<http://www.ilassotickets.com> or
 call / in-person at klpac Box Office
 Operation Hour: 10:30am-6:30pm on no show day / 10:30am-8:30pm on show day. (Box Office opens on Public Holiday)
 * Concession tickets must be purchased at the Box Office with relevant ID.
 * Credit card is needed for Phone Reservation.

Booking Inquiry: klpac Box Office (Tel: 03-4047 9000)

For more information, please log on to our website www.klpac.org.my or facebook www.facebook.com/theJapanFoundationkl

ORGANIZED BY **BUNRAKU COMMITTEE**
IN MALAYSIA 2013 & klpac



SUPPORTED BY



SPONSORED BY



IN CONJUNCTION WITH





WHAT IS BUNRAKU?

Ranking with *Noh* and *Kabuki* as one of Japan's foremost stage arts, the *Ningyo Johruri Bunraku* puppet theatre is a blend of sung narrative, instrumental accompaniment and puppet drama. This theatrical form emerged during the early Edo period (ca. 1600) when puppetry was coupled with *Johruri*, a popular fifteenth-century narrative genre. The plots related in this new form of puppet theatre derived from two principal sources: historical plays set in feudal times (*Jidaimono*) and contemporary dramas exploring the conflict between affairs of the heart and social obligation (*Sewamono*).

Ningyo Johruri had adopted its characteristic staging style by the mid eighteenth century. Three puppeteers, visible to the audience, manipulate large articulated puppets on the stage behind a waist high screen. From a projecting elevated platform (*yuka*), the narrator (*tayu*) recounts the action while a musician provides musical accompaniment on the three-stringed spike lute (*shamisen*). The *tayu* plays all the characters, both male and female, and uses different voices and intonations to suit each role and situation. Although the *tayu* "reads" from a scripted text, there is ample room for improvisation.

Approximately 160 works out of the 700 plays written during the Edo period have remained in today's repertory. Nowadays, it attracts numerous young performers, and the aesthetic qualities and dramatic content of the plays continue to appeal to modern audiences.

Programs in Malaysia:

- "Ninin-Sambaso" (Dancing Celebration)
- Act from *Honcho- Juni-Shiko "Okuniwa-kitsune-bi no dan"*(Fox Fires in the Inner Garden)
- Behind-the-Scenes Demonstration (Puppet, Shamisen and Tayu)

ARTIST PROFILE: Kanjuro KIRITAKE III, leader of Minosuke-kai

Born in Osaka in 1953, the son of the Kanjuro Kiritake II, a Bunraku puppeteer who was designated a Living National Treasure by the Japanese government. His elder sister is the actress Kyoko Mitsubayashi. He became a puppetry trainee of the Bunraku Association in 1967. He studied under Minosuke Yoshida III and first performed on stage the following year. He performs both male and female roles, having learned *tachiyaku* male roles from his father and *onnagata* female roles from his the famous *onnagata* puppeteer Minosuke. In 2003 he inherited his father's name and became Kanjuro Kiritake III. In addition to performing, he conducts workshops, he teaches at the Nose *Ningyo Jorori Rokkaku-za* theater in the Nose-cho district of Osaka and also produces new plays. He is the president in charge of copyrights for the NPO *Ningyo Jorori Bunraku-za*.

Venue : Mini Pawagam, Faculty of Film and Video, ASWARA
Admission: Free

With English subtitles. *Titles are subject to change without prior notice



JUNE 2013

Saturday, 8th June at 3pm

Rail Truck

トロッコ

(Hirofumi KAWAGUCHI / Color / 2009 / 116 min)

Cast:

Machiko ONO
Kento HARADA
Kyoichi OMAE

Synopsis:

Yumiko Yano, with sons Atsushi and Toki, travels from her home in Tokyo with the ashes of her late husband to his parents' home, a mountain village in the south of Taiwan. Having been raised in the big city, the boys are wide-eyed at the verdant rural scenery...and waiting for them is a Taiwanese grandfather who speaks Japanese.



© 2009 TROOCO LLP

Yumiko, who married against her parents' wishes, has struggled on in stubborn determination since his death. Her son Atsushi, strongly conscious that in ethnocentric Japan he is 'different', is in a state of rebellion against both the society in which he has grown up and his mother. In the verdant rural home of his grandparents, who have lived through vast changes in the political landscape and the values that prevail in society, the family rediscovers the bonds that unite it.

Setting out on a journey aboard an old-fashioned hand-powered 'rail truck', Atsushi discovers a world outside of his family and his school, and is forced to confront the question of what it means to be both an 'elder brother' and a 'son'.

JULY 2013

Saturday, 6th July at 3pm

Children Who Chase Lost Voices

星を追う子ども

(Makoto SHINKAI / Color / 2011 / 116 min)

Cast:

Hisako KANEMOTO
Miyu IRINO
Kazuhiko INOUE

Synopsis:

One day, a girl named Asuna hears a mysterious song on her crystal radio, a memento given by her father. She is never able to forget it, as it sounded almost like a song from someone's heart.

On the way to her favorite mountain hideout she is attacked by a strange beast and is saved by a young man named Shun. Coming from a faraway land called "Agartha", he tells her that he came to the surface because he wanted to meet someone, and had something he wanted to see.

The two begin to open their hearts to each other, but Shun suddenly disappears ...



© Makoto Shinkai/CMMMY



© Makoto Shinkai/CMMMY



The Japan Foundation Kuala Lumpur has been invited again to participate in the Kota Kinabalu International Film Festival (KKIFF) 2013. This year we proudly present the comedy, "Happy Flight," as the closing film for the festival. The event will take place from 7th – 13th June 2013 at GC Woolley Hall, Sabah State Museum. The film is in Japanese with English Subtitles.

KKIFF 2013 International Movie Night- "Happy Flight"

Date : 13th June 2013
 Venue : GC Woolley Hall, Sabah State Museum
 Time : 8pm * Snacks are available from 7pm
 Admission: Free

For more information and synopsis, please visit <http://www.kkiff.com/> (KKIFF official website) or www.jfkl.org.my

LANGUAGE

Japanese Language Course New Intake Let's discuss about a Japanese movie or drama in Japanese!

JULY INTAKE	
Courses	Advanced Course in Japanese Language
Module	Advanced 2
Level	B2-2 Level* (You are advised to have the proficiency of JLPT level N1 or its equivalent before enrolling into this course.) *Based on JF Standard Level (http://www.jfstandard.jp)
Date	13th July-14th Sept. 2:30pm-4:30pm (2 hours) Saturdays
Session	8 lessons
Holidays	10th Aug, 31st Aug
Place	JFKL (M Floor Northpoint, Block A)
Maximum	16 persons
Fee	RM200
How to apply	Details available on our website from 18th May 2013! http://www.jfkl.org.my



The Japan Foundation Kuala Lumpur (JFKL) offers grants to cover partial expenses for the implementation of intellectual activities and cultural events that fall into the categories of The Japan Foundation's program. The grants are awarded to projects which can promote further understanding of Japan in the areas of social sciences and humanities, or any cultural fields. For program guideline, please contact Cultural Affairs Department at jpcc@jfkf.org.my or call 03-2284 6228.

Below are some of the highlight events supported by the Japan Foundation Kuala Lumpur.
Don't miss them!

JUNE 2013 OBSCURA Festival of Photography



Date : **21st to 30th June 2013**
Venue : **Whiteaways Courtyard and China House, Georgetown, Penang**
Guest Curator from Japan: **Yumi Goto**
Organizer: **OBSCURA**
For more info, please log on to www.obscurafestival.com



21 - 30 JUNE 2013
Georgetown PENANG

www.obscurafestival.com
www.facebook.com/obscurafestival

WORKSHOPS
24 - 29 JUNE 2013

Sign up for the OBSCURA Workshops and be part of an international class, working with some of the world's best photographers and teachers.
register at: contact@obscurafestival.com

JUNE 2013 Cosplay, Comics, Anime and Games Exhibition 2013 (C2AGE 2013)

Date : **8th & 9th June 2013**
Venue : **HELP College of Art and Technology campus**
Organizer : **HELP University College Sdn. Bhd.**
Guest cosplayer from Japan: **Reika Arikawa**

C2AGE, which stands for Cosplay, Comics, Anime and Games Exhibition, is an initiative to introduce the amazing and enticing world of Japanese animation, American comics and gaming to the youth community. HELP University is striving to promote the historically unique Japanese culture amongst youth and is the first private institution of higher learning to initiate an Anime, Comics and Games (ACG) event of such proportion.

For more info, please log on to www.c2age.com

JULY 2013 TARI 2013 (INTERNATIONAL DANCE FESTIVAL)

Theme : **Dancing Across Borders**

Date : **3-7 July 2013**

Time : **Activities all day long**

Venue : **Experimental Theatre / Aswara Campus**

Organizer: **National Academy of Arts Culture & Heritage (ASWARA)**

Guest artist from Japan: **Yamada Un**

ASWARA is organizing Tari 2013 with the theme, "Dancing Across Borders". It is an international dance festival that will be held from 3rd-7th July 2013 at ASWARA. This festival is a biennial event that began in 1994 which has drawn participation from all over the world. The participants are from dance companies – professionals, NGOs and students of institutions from the ASEAN nations. It appears to be the best place to begin the long-term ideas for interaction and cooperation among participating countries. Arts and dance has undergone transformations and mutations that are culturally-specific to each region such as Buto in Japan, the Javanese understanding of the word "contemporary", and so on.



HIBIKI III
和の音魂
-Soul of Japan-

23 JUNE 2013 (Sunday)
15:30-18:00 (Doors open at 15:00)
Singapore Japanese Association (JAS) Auditorium (S1)
1120 Adam Road, Singapore 289499

\$35 (With complimentary beverages during intermission)
No admittance under 6 years old

Featuring Yasukazu Kano (Shinobue) & Ryutarō Kaneko (Taiko & Chappa)
Together with Tenko Hibikiya, Okedo Club & Singapore Miyako Club

Ticket sales available at JAS front office (1F)
Enquiry: enquiry@hibikiya.com.sg / 9083-8480

ORGANISED BY



SUPPORTED BY



OFFICIAL AIRLINES



JUNE 2013 HIBIKI III – Soul of Japan

Date : **20th - 25th June 2013**

Venue : **HIBIKIYA, Japanese Association & Waseda
Shibuya High School**

Organizer : **Hibikiya Pte. Ltd.**

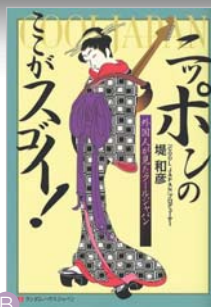
Japanese Artist: **Yasukazu Kano (Shinobue)
Ryutarō Kaneko (Taiko)**

A series of unique workshops and a concert will introduce the unique collaboration of SHINOBUE (Japanese Bamboo Flute) and Taiko. These events will not only be of benefit the Taiko or Flute communities in Singapore, but also to the general public with an interest in Japanese culture and music. Their experience in many different countries as members of KODO, the most famous Taiko group in the world, has enabled them to promote mutual understanding by introducing Japanese culture and arts overseas, and also contribute to the development of culture and arts. There will be a master class for active Chinese Flute players to understand different types of flute and to explore potential collaboration with the Japanese flute in future.

For more information, please visit www.hibikiya.com.sg

JAPANESE BOOKS

Library: What's New!!



Japanese Language for Learners

「絵で見てわかる日本語表現文型」インターカルト日本語学校【著】ナツメ社
 「中級からの日本語プロフィエンス ライティング」由井紀久子 ほか【著】凡人社
 「きらり日本語N5 語彙」斎藤美幸 ほか【著】凡人社

2012年 Library Call No.815T
 2012年 Library Call No.816T
 2012年 Library Call No.810.7925

Japanese Language for Teachers

「研究社 日本語教育辞典」近藤安子、小林和子【著】研究社
 「シャドーイングで日本語発音レッスン CD付き」戸田貴子【編著】スリエーネットワーク
 「授業の作り方Q&A 78編」大森雅美、鴻野豊子【著】アルク

2012年 Library Call No.810.7033
 2012年 Library Call No.811.1E
 2012年 Library Call No.810.72

Fiction

「楽園のカンヴァス」<第25回 山本周五郎賞>原田ハマ【著】新潮社
 「犬とハモニカ」<第38回 川端康成文学賞>江國香織【著】新潮社

2012年 Library Call No.913.6HAR
 2012年 Library Call No.913.6EKU

Non Fiction

「池上彰の宗教がわかれば世界が見える」池上彰【著】文藝春秋
 「福島原発事故をめぐって」山本義隆【著】みすず書房
 「ニッポンのここがスゴイ!外国人が見たクールジャパン」堤和彦【著】武田ランダムハウスジャパン

2011年 Library Call No.160
 2011年 Library Call No.543.5
 2011年 Library Call No.302.1

Architecture

「藤森照信の茶室学 日本の極小空間の謎」藤森照信【著】六耀社
 「京町屋の再生 Machiya Revival in Kyoto」(Bilinguals: Jap / Eng)
 財)京都市景観・まちづくりセンター【編】光村推古書院

2012年 Library Call No. 521.863
 2009年 Library Call No.521.86

History

「戦後日本=インドネシア関係史」倉沢愛子【著】草思社
 「学校制服の文化史」難波知子【著】創元社

2011年 Library Call No.319.1024
 2012年 Library Call No.383.15

Japanese Crafts

「浅草仲見世 助六物語 江戸の縁起物 Good Luck Charms of Edo」(Bilinguals: Jap / Eng)
 木村吉隆【著】亜紀書房

2011年 Library Call No.387

Comics & Children's Books

「萩尾望都作品集 なのはな」萩尾望都【著】小学館
 「しごとば 東京スカツリー」鈴木のりたけ【著】ブロンズ新社

2012年 Library Call No.726.1
 2012年 Library Call No.366.29K

<Recommended Books>

「萩尾望都作品集 なのはな」萩尾望都【著】

著者は2012年6月に少女漫画家では初となる「紫綬褒章」を受章され、数々の受賞歴をもつ日本を代表する作家の一人で、その作品は文学的にも評されています。

3.11後、著者は、胸のザワザワが止まらず、何も手がつかなくなっていました。そんな中、なのはなや妻が放射性物質で汚染された土壌をきれいにするとすることを、聞きました。福島のアちこちでも、その試みが始まっていることを知り、仕事をしたいという意欲が、湧いてきたようです。作品は福島の少女を主人公にした話題作『なのはな』と、放射性物質と人間の関係をシニカルに描いた3部作『ブルート夫人』『雨の夜』『サロメ20×x』、宮沢賢治の『銀河鉄道の夜』と新作能『光の素足』(舞台製作 中所宜夫)からアイデアを膨らませ、特別に描き下ろした「なのはな一幻想『銀河鉄道の夜』」となっています。それぞれの作品に込められた『祈り』『希望』を感じる作品集です。

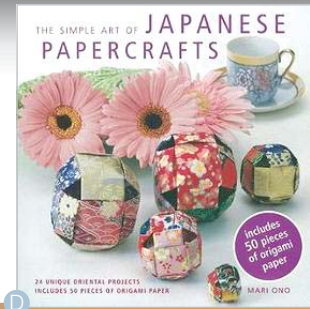
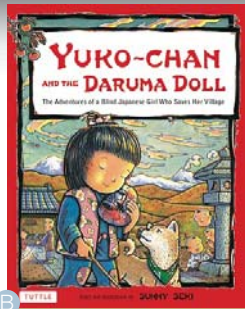
J-POP NEW ARRIVALS!

MUSIC CD ALBUMS

[[kimonobakari -Member's BEST Selection-] Ikimonogakari / Epic Records/ 2010 / Library Call No.CP195

[Uncontrolled] Amuro Namie / 2012 / avex trax / Library Call No.CP202

And SOME MORE!! ★CDs&DVDs are available in the library only.



Comic Books

- A [Nabari No Ou. 1] /by Yuhki Kamatani. New York : Yen Press, 2009. Library Call No. 726.1
- [Nabari No Ou. 2] /by Yuhki Kamatani. New York : Yen Press, 2009. Library Call No. 726.1
- [Nabari No Ou. 3] /by Yuhki Kamatani. New York : Yen Press, 2009. Library Call No. 726.1
- [Nabari No Ou.4] /by Yuhki Kamatani. New York : Yen Press, 2009. Library Call No. 726.1
- [Nabari No Ou. 5] /by Yuhki Kamatani. New York : Yen Press, 2009. Library Call No. 726.1

Childrens' Books

- B [Yuko-chan and the Daruma Doll: The Adventures of a Blind Japanese Girl Who Saves Her Village] /by Sunny Seki. Rutland, Vt. :Tuttle Pub., 2012. Library Call No 398.2952 SEK

[Treasury of Japanese folktales] /by Yuri Yasuda ; illustrated by Yoshinobu Sakakura and Eiichi Mitsui ; Japanese translation by Yumi Matsunari and Yumi Yamaguchi. Tokyo:Tuttle Pub., 2010. Library Call No. 398.20952 YAS

[One Leaf Rides the Wind : Counting in a Japanese Garden] /by Celeste Davidson Mannis ; pictures by Susan Kathleen Hartung.. New York: Viking, 2002. Library Call No. 811.6 MAN

[Japanese Nursery Rhymes : Carp Streamers, Falling Rain, and Other Traditional Favorites] /by Danielle Wright ; illustrated by Helen Acraman ; [translations by Anna Yamashita Minoura].. Tokyo:Tuttle Pub., 2011. Library Call No. 398.8 WRI

Health and Arts

- C [Japanese Farm Food] /by Hachisu, Nancy Singleton. Kansas City, Mo: Andrews McMeel Pub., 2012. Library Call No.641.5952 HAC
- D [The Simple Art of Japanese Paper Crafts : 24 Unique Oriental Projects] /by Mari Ono. New York. Cico books, 2011. Library Call No. 726.980952 ONO

General Reading

["Pirate" Publishing: The Battle Over Perpetual Copyright in Eighteen-century Britain] /by Yamada Shoji.Kyoto: International Research Center for Japanese Studies, 2007. Library call No. 021.22 YAM

[From Postwar to Postmodern : Art in Japan 1945-1989 : Primary Documents] /by Doryun Chong; et al.New York, N.Y. : Museum of Modern Art ; Durham, N.C. : Distributed by Duke Univ Press, 2012. Library Call No.702.16 FRO

<Recommended Books>

[Japanese Farm Food]

Japanese Farm Food offers a unique look into life on a Japanese farm through 135 simple recipes, personal stories and over 100 stunning photographs.

Report: “Japan Handmade – Design from Kyoto”

By Kyoko Kugai (Cultural Affairs Department, JFKL) 10th May - 2nd June 2013

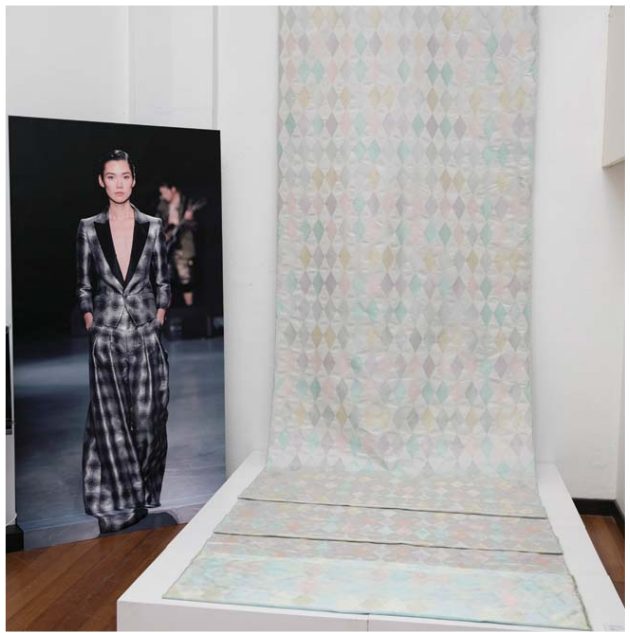
What do you think of when you think of Kyoto? Ancient city? The traditions? Temples and shrines? Yes, Kyoto has long preserved its tradition and heritage but there are also new movements to inject some fresh air into certain Kyoto brands while respecting tradition and beauty.

The Go-on project is one of them. It's a new collaboration by the young generation of long-established shops in Kyoto, who create novel designs for the international market.

Japan Handmade is one of the projects that has come about from Go-on.

The Japan Foundation, Kuala Lumpur and the National Textile Museum proudly hosted this wonderful event, “Japan Handmade ~ Design from Kyoto.”

Ms. Noriko Kawakami, a design journalist and curator of this exhibition, Mr. Masataka Hosoo, the director of Hosoo Nishijin Textiles, and Mr. Toru Tsuji, craftsman and director of Kanaami Tsuji, were invited to celebrate the opening of the exhibition together. The exhibition was officiated by Dato' Ibrahim Ismail, Director-General of Department of Museums Malaysia.



Report: JS Forum Malaysia Workshop

By Edward Lee (Japanese Language Department, JFKL) 22th – 24th April 2013

10 Japanese language students and their 8 teachers from 10 secondary schools took part in a 3-day Japanese camp at an organic farm, a pilot program to expose teachers and students to a new way of language learning, ie. project-based learning.

They were divided into 4 groups and given the task of encouraging other participants to eat a particular vegetable of their choice. Prior to that, they were introduced to organic farming and even had a go at planting corn. Once they had decided on how to carry out the assigned task, they went around interviewing farm workers, the restaurant cook, shop assistants as well as surfing the net to compile the required data. They then mapped out their strategies and made their oral presentation. At the end of their presentation, they received feedbacks from other groups.

Throughout the camp, only Japanese was used. Large portions of organic vegetables were also served at every meal. At the end of the camp, the students were surprised that they are not only able to communicate with each other in Japanese comfortably but they also grown to love vegetables, especially the organic ones!



Hands-on experience on farming

The day after the opening ceremony, a Lecture & Demonstration was held to promote deeper understanding about the exhibition as well as how crafts are made and used in the daily lives of Japanese people. Ms. Kawakami talked on some of the contemporary designs that originated from Japanese traditional crafts. Mr. Hosoo talked about his company, the Nishijin weaving technique, and new challenges facing their business.

3 kana-ami (wire netting) workshops by Mr. Toru Tsuji were also conducted. As Mr. Tsuji had to do all the touch-up works for each one of the participants, the workshops were very exclusive with only 8 participants for each session.



Students interviewing the cook!



Learning how to make a good presentation in Japanese



Students made oral presentation

Report: The 10th Japanese Speech Contest for Secondary Schools

By Hasline Sheliza (Japanese Language Department, JFKL) 28th April 2013

The annual event was held at The Japan Club of Kuala Lumpur on Sunday, 28th April 2013. A total of 14 finalists were selected to participate in the contest, comprising of winners from the Secondary Schools Category preliminary rounds for Northern, Southern, East Coastal, Central, and Sabah- Sarawak-Labuan zones, and the Private Schools Category.

The Overall Champion and Top winners from each category were awarded with a Study Tour Program to Japan, courtesy of the Japan Foundation and the Education Guardianship Group, Japan. The winners were as follows:-

Tokyo Prize	Wong Yuan Er Perak Malaysian-Japanese Friendship Society (SMJK Yuk Choy)
Osaka Prize	Lee Chee Hong Penang Japanese Language Society (SMJK Chung Hwa Confucian)
Osaka Prize	Evonne Lee Suet Wuen SMK (P) Methodist, Klang
Osaka Prize	Nermesh Singh SMK King Edward VII, Taiping
Osaka Prize	Wan Jun Aida binti Wan Ahmad Johari Sekolah Seri Puteri, Cyberjaya
Sakura Prize	Yap Jia Ling SMK (P) Temenggong Ibrahim, Batu Pahat
Special Prize (50th Anniversary of JCKL)	Khalil bin Kamarulzaman SMK Ibrahim, Sungai Petani

This annual event was co-organized by the Embassy of Japan (EOJ), The Japan Foundation, Kuala Lumpur, The Japanese Chamber of Trade & Industry, Malaysia (JACTIM) and The Japan Club of Kuala Lumpur (JCKL) in cooperation with the Ministry of Education, Malaysia. It was also held in conjunction with the celebration of the 40th Year of ASEAN-Japan Friendship and Cooperation and the 50th Anniversary of the Establishment of JCKL.

Sponsors of the event included the Education Guardianship Group, Japan, Panasonic Malaysia Sdn. Bhd., Kokuyo (Malaysia) Sdn. Bhd., Japan Airlines Co., Ltd., and Kinokuniya Bookstores Malaysia Sdn. Bhd.



JFKL Holiday Notice

Please be informed that JFKL Library will be closed on the following days:

1/6/2013 - Agong's Birthday



JAPAN FOUNDATION 国際交流基金

find us on



www.facebook.com/theJapanFoundationKL

"TEMAN BARU" is distributed to JFKL members.
JFKL membership is available upon application. Membership fee is RM10 per year.

The Japan Foundation, Kuala Lumpur (JFKL)

18th Floor, Northpoint, Block B, Mid-Valley City, No. 1, Medan Syed Putra, 59200 Kuala Lumpur
Tel: (03) 2284 6228 Fax: (03) 2287 5859

Homepage: <http://www.jfkl.org.my> E-mail: jfcc@jfkl.org.my

ISSN 1394-3448

